

## UT-208 规格书

(物料名称: 光电隔离转换器)

### 1. 品牌与制造商信息

- 品牌: 宇泰科技 (UTEK)
- 制造商:
- Logo: 

### 2. 物料型号及版本

- 型号: UT-208
- 版本: VER:01

### 3. 主要功能、特性

- 支持 RS-232/485/422 光电隔离转换器

### 4. 技术参数

- 1、接口特性: 接口兼容 EIA/TIA 的 RS-232C、RS-485/RS-422 标准
- 2、电气接口: RS-232 接口输入 DB9 母头的连接器, RS-422/RS-485 接口输出 DB9 公头的连接器
- 3、保护等级: RS-232 接口 +/-15KV ESD 保护, RS-422、RS-485 接口每线 600W 的浪涌保护。
- 4、隔离度: 隔离电压 2500Vrms 500DC 连续专用 DC/DC 模块
- 5、工作方式: 异步半双工或异步全双工
- 6、信号指示: 三个信号指示灯电源 (PWR)、发送 (TXD)、接收 (RXD)
- 7、传输介质: 双绞线或屏蔽线
- 8、传输速率: 115.2Kbps 到 300m  
38.4Kbps 到 2.4Km  
9600bps 到 5Km
- 9、外形尺寸: 113mm×55mm×25mm
- 10、使用环境: -40℃ 到 85℃, 相对湿度为 5%到 95%
- 11、传输距离: 0-5,000 米 (115200bps-9600bps)

## 5. 硬件定义及初始设定

RS-232C 引脚分配

DB9 母头 (PIN)	信号定义
1	保护地
2	发送数据 SOUT (TXD)
3	接收数据 SIN (RXD)
4	数据终端准备 DTR
5	信号地 GND
6	数据装置准备 DSR
7	请求发送 RTS
8	清除发送 CTS
9	响铃指示 RI

RS-485/RS-422 输出信号及接线端子引脚分配

DB9 公头/针型(PIN)	输出信号	RS-422 全双工接线	RS-485 半双工接线
1	T/R+	发(A+)	RS-485 (A+)
2	T/R-	发(B-)	RS-485 (B-)
3	RXD+	收(A+)	空
4	RXD-	收(B-)	空
5	GND		地线
6	VCC	电源 9-24VDC 输入或 9-24VDC 输出(100mA)	电源 9-24VDC 输入或 9-24VDC 输出(100mA)
7	N/A		
8	N/A		
9	N/A		

## 6. 产品视图 (外观图)



## 7. 产品认证资质(法律法规)说明



Shenzhen EMTEK Co., Ltd.  
 Bldg.69, Majialong Industry Zone, Nanshan District, Shenzhen, Guangdong, 518052 P.R. China  
 www.emtek.com.cn Tel:+86-755-2695 4280 Fax:+86-755-2695 4282



Certificate of Conformity

NO.: E0805125E

The following products have been tested by us with the listed standards and found in conformity with the council EMC directive 2004/108/EC. It is possible to use CE marking to demonstrate the conformity with this EMC Directive.


Applicant	: UTEK TECHNOLOGY(SHENZHEN) CO., LTD.
Address	: 7/F, No.1, Xinghua 1 Road, District 44, Baoan, Shenzhen
Manufacturer	: UTEK TECHNOLOGY(SHENZHEN) CO., LTD.
Address	: 7/F, No.1, Xinghua 1 Road, District 44, Baoan, Shenzhen
Trade Mark	: UTEK
EUT	: Interface Converters
M/N	: UT-206, UT-208, UT-209, UT-218
Test Standards	: EN55022: 2006 EN61000-3-2: 2006 EN61000-3-3: 1995+A1: 2001+A2: 2005 EN55024: 1998+A1: 2001+A2: 2003




  
 (Manager)  
 May 25, 2008



The test report was carried out from the submitted type samples of a product in conformity with the specification of the respective standards. The certificate holder has the right to fix the CE-mark for EMC directive on the product complying with the inspection samples.



Shenzhen EMTEK Co., Ltd.  
 Bldg.69, Majialong Industry Zone, Nanshan District, Shenzhen, Guangdong, 518052 P.R. China  
 www.emtek.com.cn Tel:+86-755-2695 4280 Fax:+86-755-2695 4282



Declaration of Conformity


This device is in conformance with Part 15 of the FCC Rules and Regulations. Operation of this product is subject to the following two conditions: (1) this device may not cause harmful interference, and (2) this device must accept any interference received, including interference that may cause undesired operation.

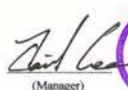
Applicant	: UTEK TECHNOLOGY(SHENZHEN) CO., LTD.
Address	: 7/F, No.1, Xinghua 1 Road, District 44, Baoan, Shenzhen
Manufacturer	: UTEK TECHNOLOGY(SHENZHEN) CO., LTD.
Address	: 7/F, No.1, Xinghua 1 Road, District 44, Baoan, Shenzhen
Trade Mark	: UTEK


EUT Certification Summary

Equipment Class	: FCC Part 15 Class B
Report Number	: E0805125F
Tested by	: SHEN ZHEN EMTEK CO., LTD

We, the responsible party:  
 UTEK TECHNOLOGY(SHENZHEN) CO., LTD.  
 Declare that the product  
 Interface Converters  
 M/N: UT-206, UT-208, UT-209, UT-218

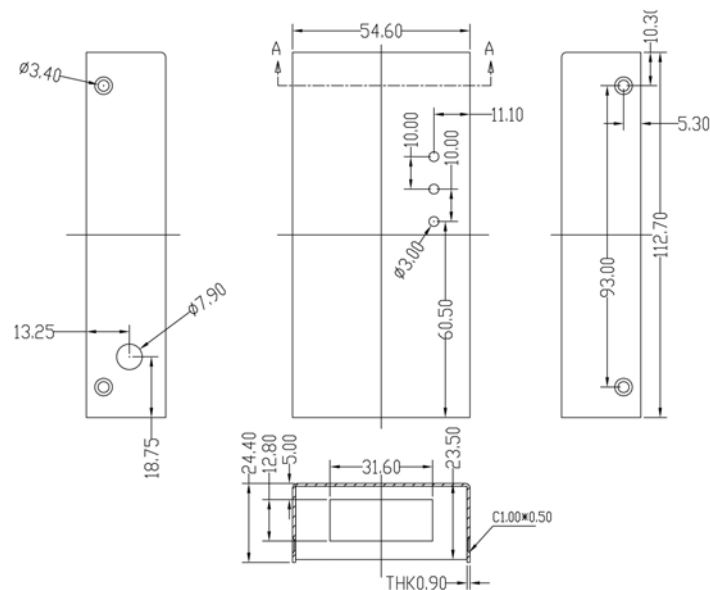


  
 (Manager)  
 May 25, 2008



Was tested to conform to the applicable FCC Rules and Regulations. The method of testing was in accordance to the most accurate measurement standards possible, and that all necessary steps have been enforced to assure that all production units of the same equipment will continue to comply with the Federal Communications Commission's requirements.

## 8. 结构尺寸图



## 9. 机身铭牌（包含认证标识）



## 10. 附件清单

名称	数量（单位）
包装盒	1PCS
珍珠棉	1PCS
说明书	1PCS
火牛	1PCS
串口线	1PCS
接线柱	1PCS
产品合格证	1PCS

## 11. 包装方式及外箱标识



包装盒尺寸是：280×160×65mm

注：生产批号、生产日期以实际货物为准。

## 12. 存储运输要求

存储温度：-40 度到+85 度,相对湿度为 5%到 95%

## 13. 加工/组装/安装注意事项（可选）

## 14. 典型参数的测试方法（可选）

## 15. 产品质保及服务（可选）